



**2015 Illuminator**  
**Covert Scouting Camera Instruction Manual**

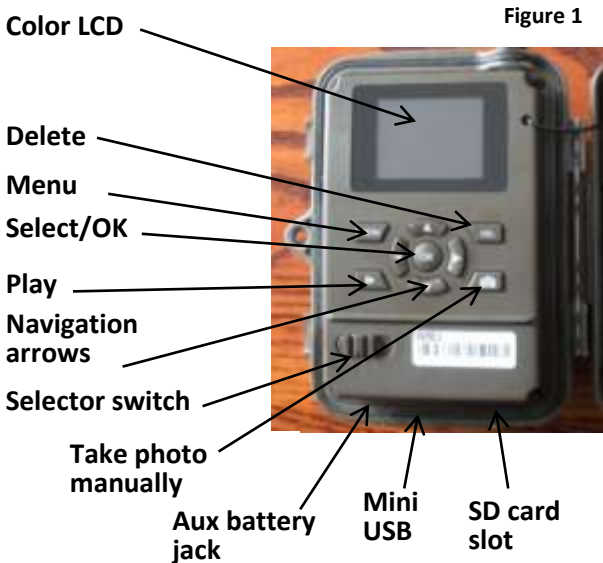


## Table of Contents

Camera button info diagram: .....	3
Installing the batteries: .....	4
Installing the SD card: .....	5
Understanding main screen info:.....	6
Customizing the camera settings:.....	7
Setting the camera mode:.....	8
Camera mode settings: .....	8
Video mode settings: .....	9
PIR tab: .....	11
SYS tab:.....	14
Viewing photos on the color display:.....	19
Tricks and tips on field setup: .....	21
Troubleshooting:.....	<b>Error! Bookmark not defined.</b>
Warranty: .....	<b>Error! Bookmark not defined.</b>
Warranty Policy and Procedure: .....	<b>Error! Bookmark not defined.</b>

Congratulations on your purchase of the 2014 Illuminator white flash Covert Scouting Camera! We truly value your business and will strive to provide you top quality customer service should you ever need help with any of our products. Check out our other products on our website at [www.covertscoutingcameras.com](http://www.covertscoutingcameras.com)

## Camera button info diagram: (Figure 1).



## **Installing the batteries:**

The Illuminator can function short term on 4AA batteries. Improved battery life on 8-AA, but we suggest you use 12AA batteries to maximize camera performance and battery life. Using Covert 2300mAh, NiMH rechargeable AA batteries can extend the battery life significantly.

Install the batteries by sliding the top battery in to the sleeve first, then depressing the spring with the other battery and snapping down in place. Pay attention to the (+) or (-) molded into each sleeve to determine if you insert the positive or negative end into the sleeve first. Negative battery terminal always contacts the spring.



**Figure 1**

## Installing the SD card:

To be able to power up the camera you will need to install a Covert SD card in the slot in the bottom of the camera. NOTE: You do not have to use a Covert SD card. See figure 3 below for card orientation. Push into the card slot until it clicks and release. To remove, repeat that process, the card will pop out enough to remove. You can use any SD card size up to 32G. You must have the SD card in the camera to be able to turn the camera on and set it up.



Figure 3

# Understanding main screen info:

Camera/Video icon

Mega Pixels chosen

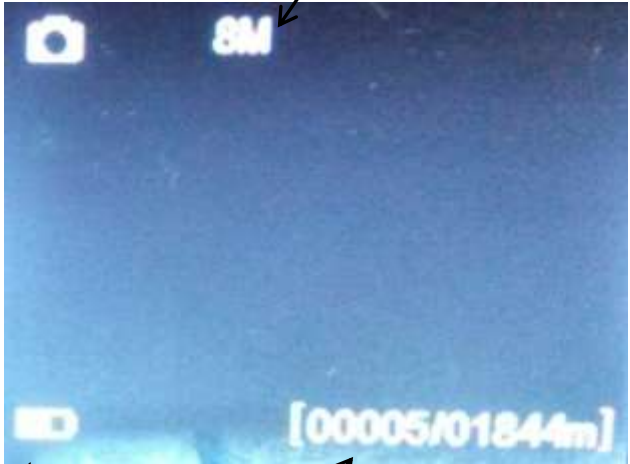


Figure 4

Battery life indicator

# of photos taken

# of photos remaining on card

## Customizing the camera settings:

Your camera is set to function with the default settings without any further customization. However, you will likely want to at very least set the clock and date. The following information will help you customize your camera settings so you can get the most out of the trail camera experience.

To start, Press the **MENU** button on ceto open the customization menus. We will start with the **CAM** system tab. You will see **CAM**, **PIR**, and **SYS** tabs across the top of the screen. **CAM** should be highlighted in yellow. (Figure 5).



Figure 5

## Setting the camera mode:

Press the ▼ button to highlight the Camera Mode option in yellow. Either **Photo** or **Video** will show up in a white box to the right. Press the ► button to toggle between **Photo** or **Video** until the option you want shows in the white box. Press **OK**.

**NOTE:** If you do not press **OK**, your setting will return back to the previous setting.

## Camera mode settings:

**PHOTO SIZE:** Press the ▼ or ▲ button to highlight Photo Size in yellow.

Press the ► arrow repeatedly to toggle between 3mp, 5mp, 8mp, and 12mp. Press **OK** once the desired option shows in the white box.

**PHOTO BURST:** Your camera can take a 1, 2 or 3 shot burst every time the PIR is triggered to take a photo.



Press the ▲ or ▼ buttons to highlight the **PHOTO BURST** option: To set this function, press the ► repeatedly to show the 1 Photo, 2 Photos, or 3 Photos option. Press **OK** to save the desired setting.

## Video mode settings: (Figure 6).

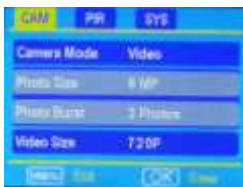


Figure 6

**VIDEO SIZE:** You can choose from VGA(16fps) or QVGA(20fps.)

Press the ► button to toggle between the 2 options. Press **OK** to save the setting.

**VIDEO LENGTH:** You can adjust the length of time the camera takes a video from 5-60 seconds. Press the ▲ or ▼ button to highlight the **VIDEO LENGTH** option. Press the ◀ or ▶ buttons repeatedly to change the number of seconds shown in the white box. **Long videos fill the SD card up quickly.** For

short night videos, we recommend a trigger interval for double the amount of time of your video.

**Example:** 10 second videos=20 second trigger interval.

**VIDEO SOUND:** Your camera can record sound on videos. Press the ▼ button to highlight the **Video Sound** option. Press the ► button to toggle between **ON** and **OFF**. Press the **OK** button to save the setting.

## PIR tab:

Press the ◀ or ▶ buttons repeatedly until only the PIR tab is highlighted in yellow in the menu. Screen should appear like Figure 22.



Figure 22

**PIR TRIGGER ON/OFF:** The camera is embedded with an automatically adjusting temperature setting. This temperature sensor will adjust its sensitivity by detecting changes in the environment on its own. Our goal was to enhance customer experiences by adding this special feature. You will

no longer have to manually adjust the sensitivity of the PIR with this simplified setting.

**TRIGGER INTERVAL:** Allows you to customize how often the camera can be allowed to take a photo. Press the ▲ or ▼ arrow to highlight the **Trigger Interval option**. Repeatedly press the ◀ or ▶ to adjust the timing. Options are 5-60 seconds (5 second increments) and 1-60 minutes. Once you have chosen your desired trigger interval, press the **OK** button to save the setting. Note: Even if you have a 0 second trigger interval, there will be a 7-12 second delay to write the photos to the SD card.

**TIP:** You can press and hold the ◀ or ▶ button to speed through the settings rather than repeatedly pressing the button.

**TIME LAPSE:** Press the ▼ ▲ arrow to highlight the **Time-Lapse** option. This option allows your camera to automatically take a photo without being triggered by the PIR. If you already set the **Sensitivity** to **OFF**, then the camera will only take photos when the **Time-Lapse** option is on. If you

have the PIR set to **LOW**, **NORMAL**, or **HIGH**, the camera will also take photos when the PIR is triggered. To turn the **Time-Lapse** option on, use the ◀ or ▶ buttons to choose a time option. 5-60 seconds (in 5 second increments) and 2-60 minutes. Once you have chosen the time option you want, press **OK** to save the setting. The camera will continuously take photos in timed increments you set. Remember, this will generate a lot of photos and you may want to check more frequently as it will fill the SD card up fast. Use max size SD card for best performance.

**START-STOP:** If you only want your camera to be on during part of the day each day you can set the Start-Stop function, however the camera will **NOT** detect motion during stop times. Press the ▲ ▼ buttons to highlight the Start-Stop option. The default setting is **OFF**. Press the ▶ button to toggle the setting to **ON** and press **OK**. See Figures 8 & 9 on the next page.

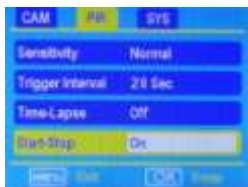


Figure 8



Figure 9

Once you press **OK** you will see the screen in Fig. 9. Use the **▲ ▼** buttons to set the time in hours (military time) and press the **▶** button to change to minutes and use the **▲ ▼** to set the minutes.

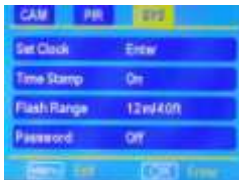
Press the **▶** button to navigate to the Stop settings and repeat the process from above to set the Stop time. You can press the **◀** or **▶** buttons to navigate back through the settings if necessary. Once you have the start-stop times set, press **OK** to save the settings.

## **SYS tab:**

The SYS tab controls all the internal system information such as Setting the clock, Time stamp,

Flash range, Password, Over Write, and Format.  
(Fig.10)

Figure 10



**SETTING THE CLOCK:** Scroll over to the **SYS** tab using the ◀ or ▶ buttons and then press the ▼ button to highlight the **Set Clock** option. Press **OK**. You will see the following screen. (Figure 11).

Figure 11



Press the ▲ or ▼ button to set the **MONTH**, the press the ► button to navigate to the **DATE** and use the ▼ or ▲ buttons to set the date. Press the ► button to navigate to the year and set that using the ▲ or ▼ buttons.

Navigate down to the time using the ► button and follow the same process as above to set the time. Once you have the time set, press **OK** to save the settings.

**TIME STAMP:** Press the ▼ button to highlight the **Time Stamp** option. The default setting for the **Time Stamp** option is **ON**. This puts the Time, Date, Temp and moon phase at the bottom of the camera. If you do not want the Time Stamp **ON**, use the ► button to toggle to the **OFF** position. Press **OK** to save the settings.

**FLASH RANGE:** You can set the Flash Range depending on your set up. If most of the subjects are going to be inside 20', use the 6m/20ft setting. If you need extended night vision, choose the 12m/40' option. Press the ▼ button to highlight



the **Flash Range** option. Use the ► button to navigate between the two different settings. Press OK to save the settings.

**PASSWORD:** Press the ▼ button to highlight the **Password** option. You can password protect your camera with this setting. The default setting is **OFF**. **Make sure you write down your password or store it in your phone so you don't lose it.** If you set this option to **ON**, you will not be able to access your camera without the password. This is a very important security feature. To turn the password On, press the ► button to toggle to **ON** and press **OK**. You will see the following screen. (Figure 12).



Figure 12

Use the ▲ , ▼ and ► buttons to set the password. Press OK to save the settings.

If you forget your password, please email us at support@dlccovert.com or call us at 877-462-1799 to request an RA#. We require warranty registration to verify your camera.

**OVER WRITE:** The **Over Write** function will save new photos over the old photos on your SD card if it becomes full. Each time a new photo is taken the oldest photo on the card will be overwritten.

The default for this option is **OFF**. If you want to change this, Press the ▼ button to highlight the **Over Write** option and then press the ► button to toggle the setting to **ON**. Press **OK** to save the setting.

**FORMAT:** Be sure to format your SD card every time before using your camera. Even if you have a new SD card, you should always format the card before you use it in the camera.

To format the SD card, press the ▼ button until the **Format** option is highlighted. Press the **OK** button.

You will see a screen that has Yes and No on it, use the ► button to navigate to **YES** and press **OK**.

**DEFAULT SET:** The **Default Set** option is the last option in the **SYS** tab. If you want to start clean and re-set all the settings to the original factory default settings you will choose this option. Press the ▼ button to highlight the **Default Set** option. Press **OK**. Make sure 100% that you want to re-set all the settings to factory default as you will have to start over with the process in re-doing all the settings.

### **Viewing photos on the color display:**

You can view your photos on the color display when in the field. If you want to do this, make sure the **Selector switch** is set to **SETUP**. Press the **Play** button. You can use the ◀ or ▶ buttons to toggle through the photos. If you see photos you want to delete, show the image on the screen and press the **DEL** button. This will delete the photo that is showing on the screen.

You will see the screen below. Use the ► button to navigate to **YES** and press **OK**. If you do not want to delete, press the **NO** button to exit. (Fig. 13)



Figure 13

**ZOOMING IN ON COLOR VIEWER:** Press the Play Button one time, then the ▲ button. Next press the OK button to adjust the area of the photo that you want to zoom into. Press OK again to zoom in. Zoom capabilities up to 8.0X. You can scroll left to right by pressing **OK** and toggling left to right using the ◀ and ▶.

**AUXILIARY POWER:** Your camera comes with an Auxiliary power jack. If you want to hook up an external 6V battery to power the camera, you can. The jack necessary to make the connection is a standard 4mm jack.

**MINI USB:** Your camera comes with a mini USB cable to hook up to your computer or TV to look at the photos. Plug the small jack of the cable into the bottom of the camera. Plug the USB end into the USB port on your home computer or USB capable television. The USB will recognize the new hardware and download the proper driver to view the images or videos. The screen on the camera will say Mass Storage. If the image files don't automatically open, you will need to open it using Windows Explorer to locate the camera. It will appear as a **removable disk**.

## **Tricks and Tips/Troubleshooting**

- For best results, mount the camera approximately 4 feet off the ground facing straight forward as level as possible.
- To enhance the flash, we recommend positioning the camera in an area with a backdrop to reflect the maximum amount of light. For instance, place the camera 20-30' from a field edge facing the woods. For the

inside of timber, positioning the camera facing a thicket approximately 20-30' away.

- Try to set the camera up so it's not facing directly into the sun either in the morning or the evening when game movement is at its peak.
- Use the Covert Tree60 mounting system to mount the camera up higher pointing down on them for a better look. Works great when you don't have a straight tree to attach to.  
[www.covertscoutingcameras.com](http://www.covertscoutingcameras.com)

**ISSUE:** Camera will not turn on.

**POSSIBLE PROBLEM:**

- No SD card in the card slot
- Corrupt SD card
- Batteries are too low to power up camera

**POSSIBLE SOLUTION:**

- Insert SD card in card slot
- Try a different SD card
- Install fresh batteries

If you are still having problems with your Covert Illuminator contact customer service at 877-462-1799 or e-mail us at support@dlccovert.com

The Illuminator night videos take 1 minute videos and need time for the battery to recuperate. Make sure that your trigger interval is set on double the amount of time you set to record a video. For example:

30 second video=1 minute trigger interval

15 second video=30 second trigger interval

Still having trouble? Format the SD Card, then Default the Camera. Customize your settings how you prefer.

When turning camera from setup mode to the on position, the screen goes black. It is supposed to do this.

- The FW version is reference to our engineers to ensure a speedy and efficient warranty repair should the need arise.

**IMPORTANT NOTE:** Contact Covert Support for troubleshooting prior to contacting the retail store from which you purchased the product. We will be happy to take care of you!

## **Covert Scouting Cameras Warranty:**

Covert Scouting Cameras warranties this product for a period of 1 year from the date of purchase. This warranty only covers manufacturer's defects and does not cover damage caused by misuse or abuse of the product. This warranty includes one year repair or replacement service on product from date of purchase. If you have problems with this product, please do not contact the store you purchased it from. Contact Covert Scouting Cameras Customer service toll free at 877-462-1799 or e-mail us at [support@dlccovert.com](mailto:support@dlccovert.com). You can also visit our website at [covertscoutingcameras.com](http://covertscoutingcameras.com), click on support and fill out the support form. We will get back to you usually within 24 hours. Proof of purchase will be required for replacement.



*The option to purchase a 2nd year warranty when you register your camera within 10days is available on our website at [www.covertscoutingcameras.com](http://www.covertscoutingcameras.com)*

## **Covert Warranty Policy and Procedure:**

To receive repair or replacement by Covert Scouting Cameras one year warranty, we ask you to do the following:

**-All returns must have a Return Authorization (RA#) prior to sending in the camera.**

1. E-mail or call our customer service department.  
-support@dlccovert.com  
-toll free: 877-462-1799  
Please explain to the technician what issues you are having with your camera.
2. If you are asked to return your camera to Covert Scouting Cameras, you will be responsible for the cost of shipping to Covert Scouting Cameras. In return, Covert will provide fast and exceptional service as well as

- incur the cost of shipping back to you. (Only within the Continental United States.)
3. Please include the following information when sending in your camera.
    - RA# on outside of package
    - Return address
    - Telephone and Email address
    - Brief description of the problem
    - Copy of proof of purchase
  4. Please make sure all the accessories are removed (i.e. SD Cards, batteries, solar panels SIM cards, straps, ETC.) before shipping. All accessories received by Covert Scouting Cameras will NOT be returned.
  5. This warranty only covers manufactures' defects and does not cover damaged caused by misuse or abuse of the product.

## **Covert International Warranty Policy and Procedure:**

1. Outside the US, service is the available through the distributor/reseller of purchase.

2. All returns must have an RA# provided by Covert. Copy of Proof of Purchase is required for all returns.

3. Covert is not responsible for lost or damaged products incurred during the shipping process.

4. Insurance for returns is at the discretion of the customer. Additional charges apply for return shipping.

In the maintenance of the product, Covert Scouting Cameras may use new or equivalent, to new parts, assemblies or products for equal or improved quality. All defective parts, assemblies, and products became the property of Covert. Return and claims will be handled according to the current Covert Scouting Cameras, Inc. procedure.

These warranties shall not apply to any defect, failure or damage caused by improper use or improper or inadequate maintenance and care. Covert shall not be obligated under these warranties:

- a. To repair damage resulting from attempts by personnel other than Covert representatives to install, repair or service the product unless directed by a Covert representative.
- b. To repair damage, malfunction or degradation of performance resulting from improper use or connection to incompatible equipment or memory.
- c. To repair damage, malfunction, or degradation of performance caused by the use of non-Covert supplies or consumables or the use of Covert supplies not specified for use with this product.
- d. To repair an item that has been modified or integrated with other products when the effect of such modification or integration increases the time or difficulty of servicing the product or degrades performance or reliability.
- e. To perform user maintenance or cleaning or to repair damage, malfunction.

- f. To repair damage, malfunction or degradation of performance resulting from use of the product in an environment not meeting the operating specifications set forth in the user manual.
- g. To repair damage, malfunction or degradation of performance resulting from failure to properly prepare and transport the product as prescribed in published product materials
- h. Failure to register the product warranty within 10 days of purchase.
- i. To replace items that have been refilled, are used up, abused, misused, or tampered with in any way.
- j. To install replacement items that are not considered customer replaceable.
- k. To support software not supplied by Covert
- l. To provide software or firmware updates or upgrades.

Any service identified in the above list and provided by Covert at the Customer's request shall be

invoiced to the customer, at Covert's then current rates for parts, labor and shipping.

THE ABOVE WARRANTIES ARE GIVEN BY COVERT WITH RESPECT TO THIS PRODUCT AND ITS RELATED ITEMS IN LIEU OF ANY OTHER WARRANTIES, EXPRESS OR IMPLIED. COVERT AND ITS VENDORS DISCLAIM ANY IMPLIED WARRANTIES OF MERCHANTABILITY OR FITNESS FOR A PARTICULAR PURPOSE OR ANY SIMILAR STANDARD IMPOSED BY APPLICABLE LEGISLATION. COVERTS RESPONSIBILITY TO REPAIR, REPLACE, FOR DEFECTIVE PRODUCTS AND RELATED ITEMS IS SOLE AND EXCLUSIVE REMEDY PROVIDED TO THE CUSTOMER FOR BREACH OF THESE WARRANTIES.

Some states, provinces, and countries do not allow the exclusion or limitation of incidental or consequential damages or exclusions or limitation on the duration of implied warranties or conditions, so the above limitations or exclusions may not apply to you. This warranty gives you specific legal rights, and you may also have other rights that vary by state, province, or country.

TO THE EXTENT ALLOWED BY LOCAL LAW, EXCEPT FOR THE OBLIGATIONS SPECIFICALLY SET FORTH IN THIS WARRANTY STATEMENT, IN NO EVENT SHALL COVERT AND ITS VENDORS BE LIABLE FOR ANY INDIRECT, SPECIAL, INCIDENTAL OR CONSEQUENTIAL DAMAGES (INCLUDING LOSS OF PROFITS) WHETHER BASED ON CONTRACT, TORT, OR ANY OTHER LEGAL THEORY AND IRRESPECTIVE OF WHETHER COVERT OR THE VENDOR HAS ADVANCE NOTICE OF THE POSSIBILITY OF SUCH DAMAGES.